



**Cable ID: LCU5-12CU-0100-S**

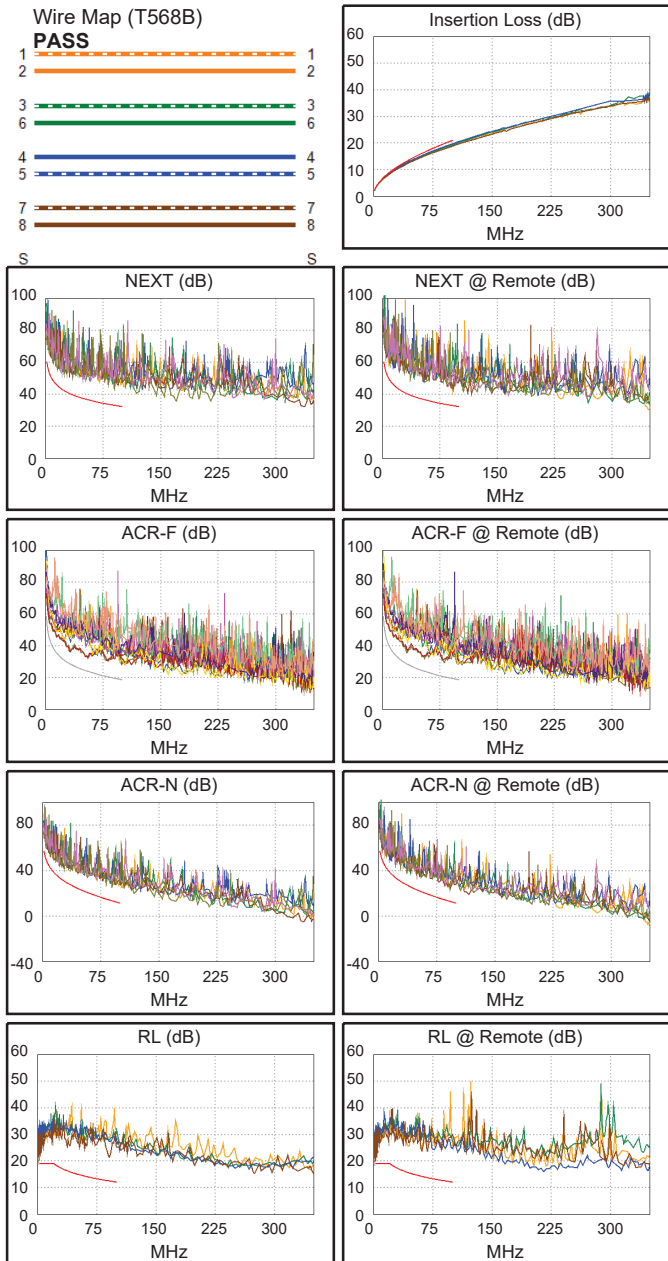
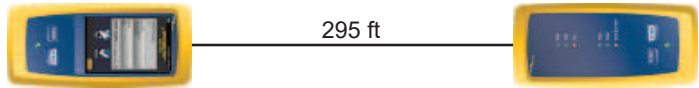
Test Limit: TIA Cat 5e Perm. Link  
Limits Version: V7.4  
Date / Time: 10/17/2024 01:08:02 PM  
Headroom 9.2 dB (NEXT 1,2-3,6)  
Cable Type: Cat 5e U/UTP  
NVP: 69.0%

Main: Versiv  
S/N: 1944019  
Software Version: V6.4 Build 4  
Calibration Date: 04/02/2024  
Adapter: DSX-8000 (DSX-PLA804)  
S/N: 22420161

**Test Summary: PASS**

Remote: Versiv  
S/N: 1944025  
Software Version: V6.4 Build 4  
Calibration Date: 04/02/2024  
Adapter: DSX-8000R (DSX-PLA804)  
S/N: 22420162

Length (ft), Limit 295	[Pair 7,8]	295
Prop. Delay (ns), Limit 498	[Pair 4,5]	445
Delay Skew (ns), Limit 44	[Pair 4,5]	11
Resistance (ohms)	[Pair 1,2]	20.97
Insertion Loss Margin (dB)	[Pair 4,5]	1.3
Frequency (MHz)	[Pair 4,5]	100.0
Limit (dB)	[Pair 4,5]	21.0



Worst Case Margin Worst Case Value

PASS	MAIN	SR	MAIN	SR
Worst Pair	1,2-7,8	1,2-3,6	3,6-7,8	1,2-3,6
NEXT (dB)	10.0	9.2	10.2	9.2
Freq. (MHz)	21.5	92.0	89.8	92.0
Limit (dB)	43.2	32.9	33.1	32.9
Worst Pair	3,6	3,6	3,6	3,6
PS NEXT (dB)	10.4	8.1	11.1	8.1
Freq. (MHz)	10.0	91.8	90.0	91.8
Limit (dB)	45.5	29.9	30.1	29.9

PASS	MAIN	SR	MAIN	SR
Worst Pair	4,5-3,6	3,6-4,5	1,2-7,8	7,8-1,2
ACR-F (dB)	7.0	6.9	9.8	9.4
Freq. (MHz)	31.8	31.8	99.3	99.0
Limit (dB)	28.6	28.6	18.7	18.7
Worst Pair	3,6	4,5	1,2	1,2
PS ACR-F (dB)	10.0	9.7	11.8	11.3
Freq. (MHz)	31.8	32.0	97.3	99.3
Limit (dB)	25.6	25.5	15.9	15.7

N/A	MAIN	SR	MAIN	SR
Worst Pair	3,6-7,8	1,2-3,6	3,6-4,5	1,2-3,6
ACR-N (dB)	10.6	9.7	12.9	10.5
Freq. (MHz)	15.3	8.1	94.0	92.0
Limit (dB)	37.9	44.4	12.5	12.9
Worst Pair	3,6	3,6	3,6	3,6
PS ACR-N (dB)	10.6	9.5	12.4	9.5
Freq. (MHz)	10.0	91.8	90.0	91.8
Limit (dB)	39.3	9.9	10.3	9.9

PASS	MAIN	SR	MAIN	SR
Worst Pair	7,8	7,8	7,8	7,8
RL (dB)	3.7	3.1	8.9	3.1
Freq. (MHz)	2.8	2.8	90.5	2.8
Limit (dB)	19.0	19.0	12.4	19.0

Compliant Network Standards:  
 10BASE-T      100BASE-TX      100BASE-T4  
 1000BASE-T    2.5GBASE-T      ATM-25  
 ATM-51        ATM-155          100VG-AnyLan  
 TR-4           TR-16 Active      TR-16 Passive